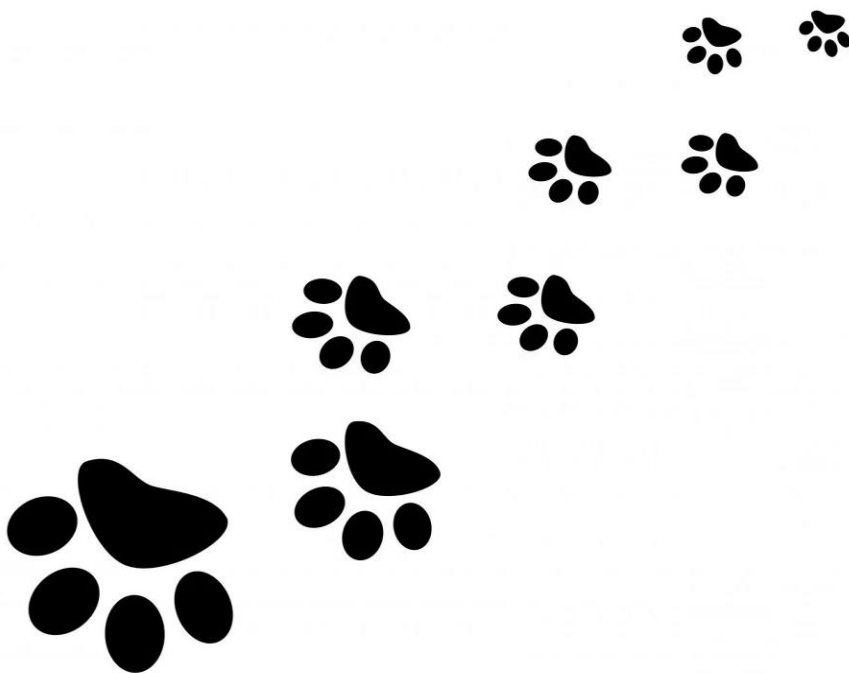


Alla scoperta dei vertebrati!



Chi sono i vertebrati?

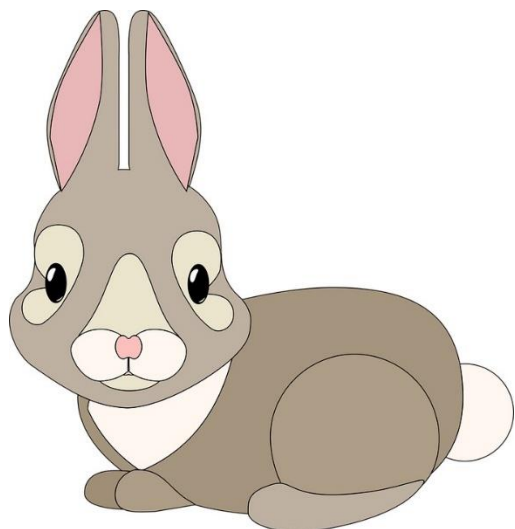
**I vertebrati sono tutti gli
esseri viventi che
possiedono uno scheletro
interno...**

Come loro!!



Se chi è vertebrato possiede uno scheletro e quindi delle ossa, chi tra questi simpatici amici può essere definito vertebrato?

Con una matita fai un cerchio intorno all'immagine di chi pensi faccia parte della famiglia dei vertebrati...
...alla fine del gioco troverai le soluzioni!



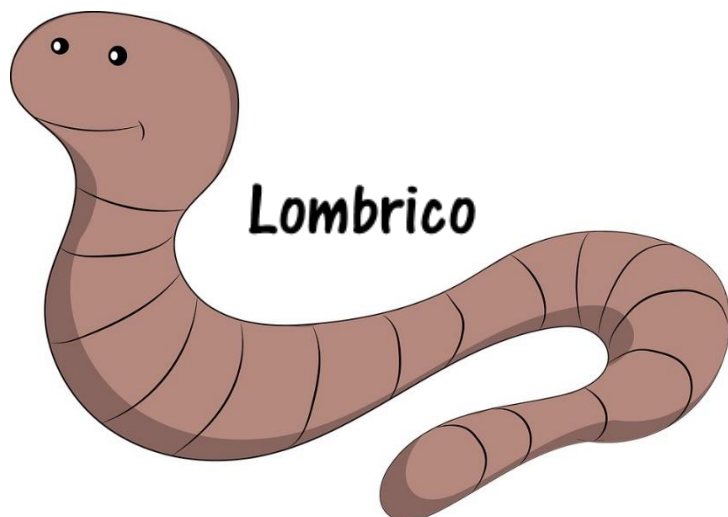
Coniglio



Pesce



Fragola



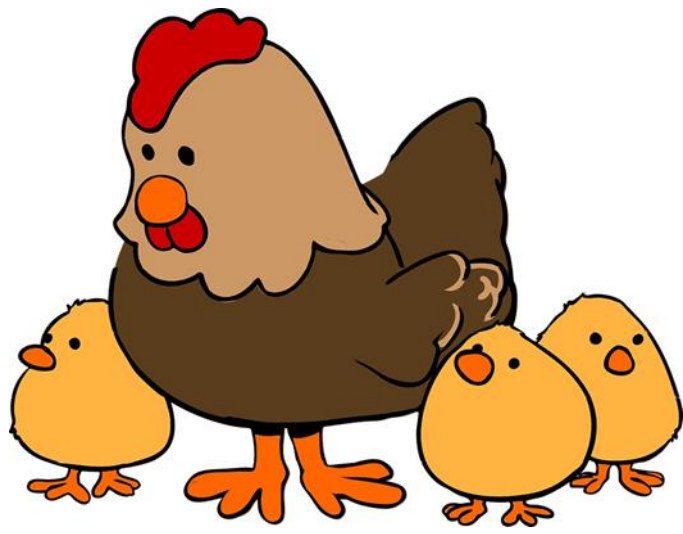
Lombrico



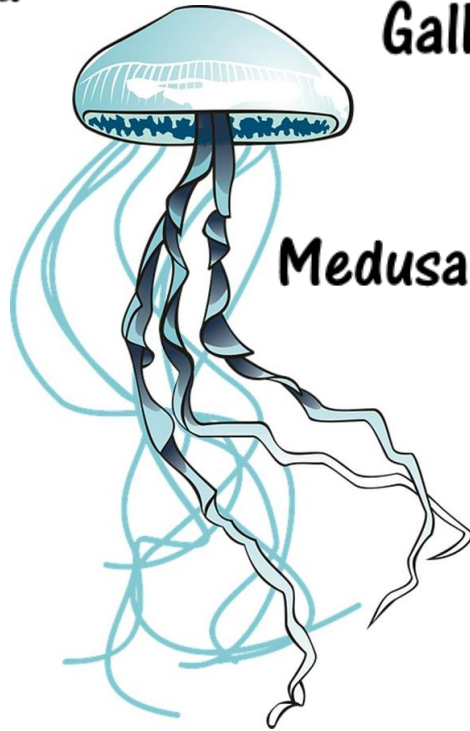
Koala



Aragosta



Gallina con pulcini



Medusa



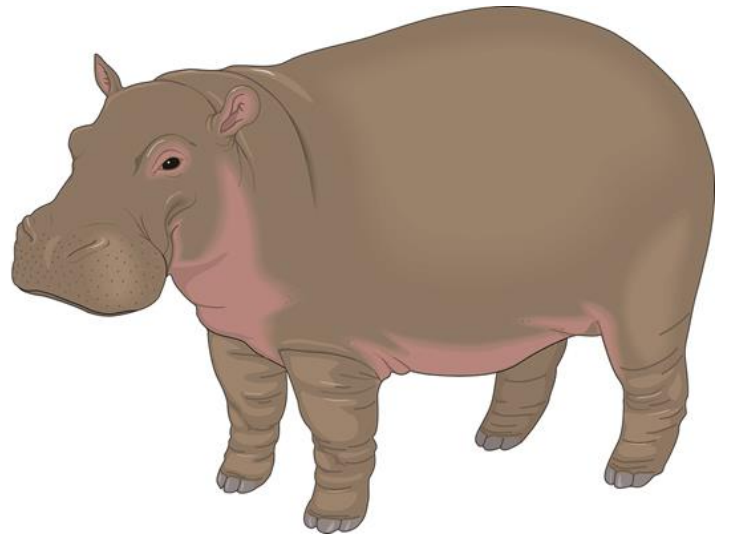
Fungo



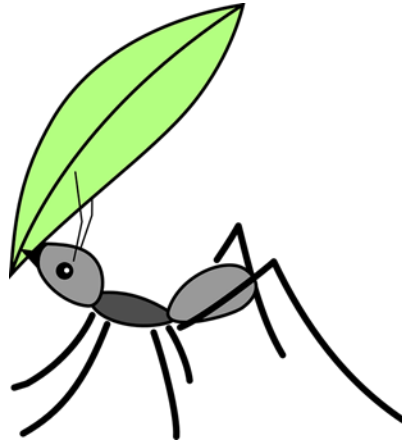
Bradipo



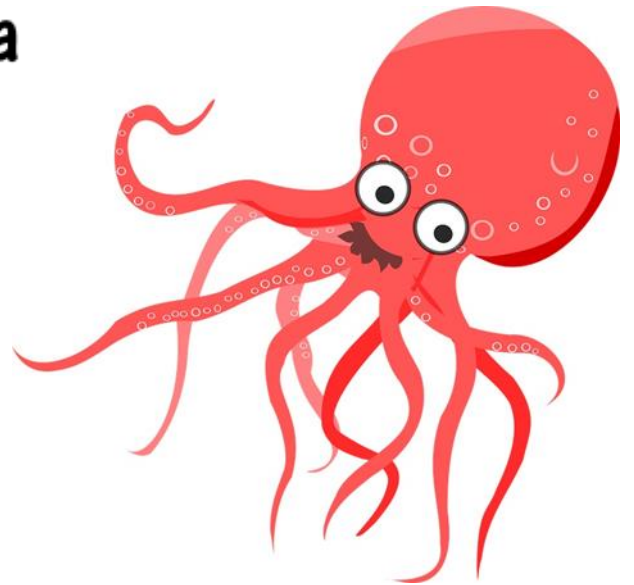
Pulcinella di mare



Ippopotamo



Formica



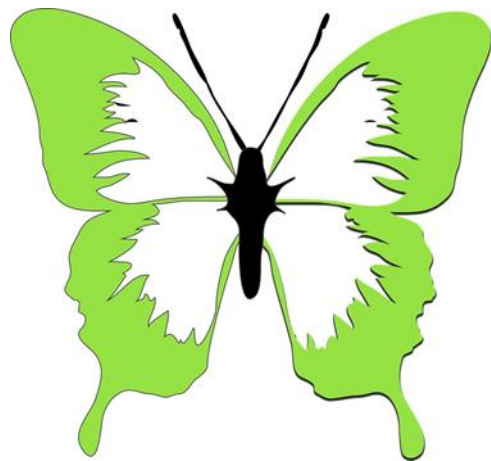
Polpo

Salmone





Gufo



Farfalla

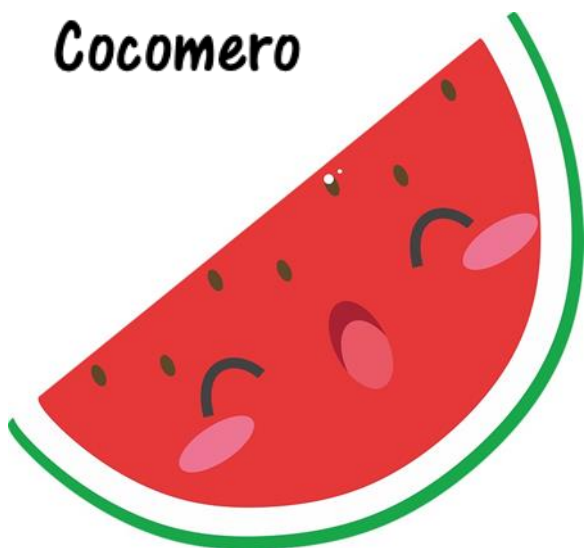


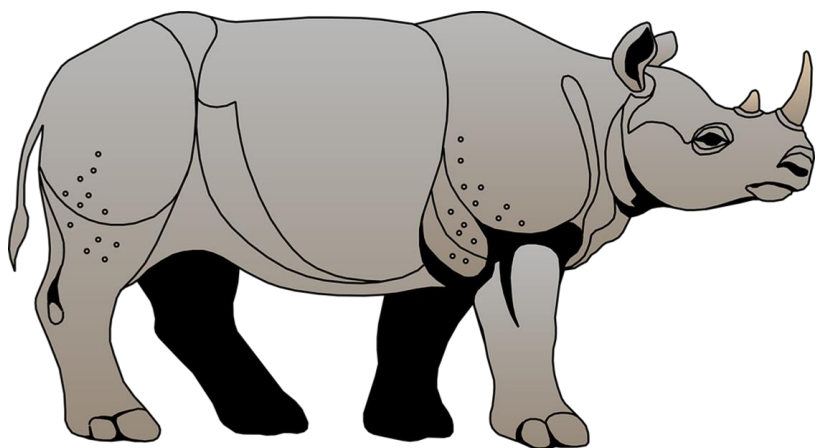
Granchio

Delfino



Cocomero





Rinoceronte



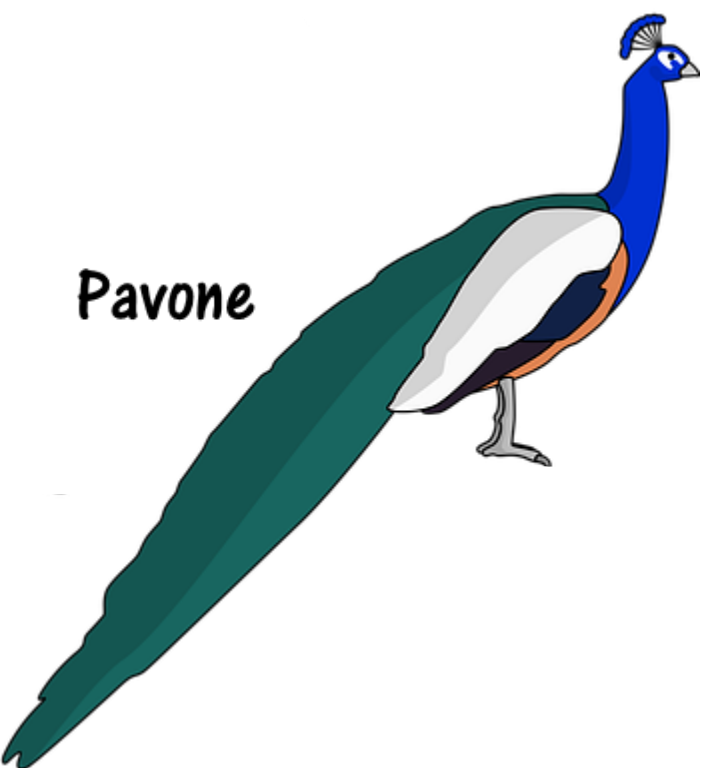
Picchio



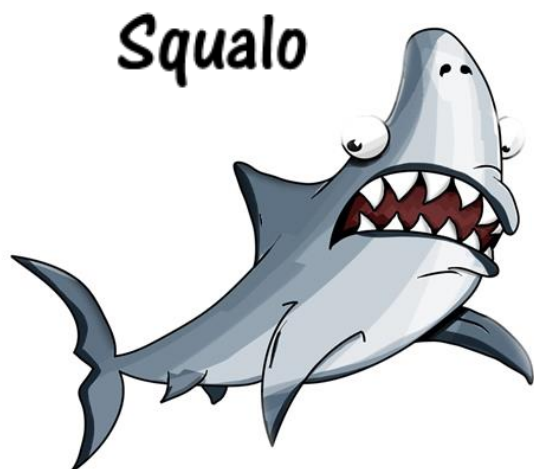
Bambino



Canguro



Pavone



Squalo

Regno Animale

Vertebrati

Invertebrati

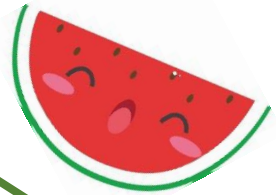


Vertebrati

Invertebrati

Regno Vegetale

Regno Funghi



I vertebrati, coloro che possiedono uno scheletro interno ed una colonna vertebrale, appartengono solo al Regno Animale

Regno animale



VERTEBRATI

INVERTEBRATI

Mammiferi



Uccelli



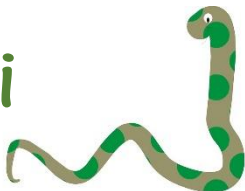
Pesci



Anfibi



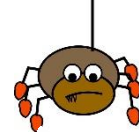
Rettili



Insetti



Vermi



Aracnidi



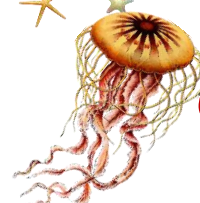
Molluschi



Crostacei



Echinodermi



Celenterati



Poriferi